

4

3

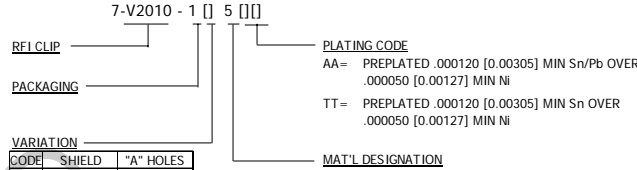
2

1

NOTES: UNLESS OTHERWISE SPECIFIED

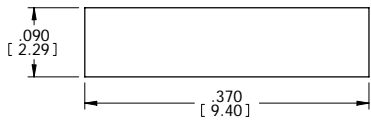
- 1 INTERPRET DRAWING IN ACCORDANCE WITH ANIS Y14.5-1994
- 2 PARTS TO BE PACKAGED IN TAPE & REEL PER EIA STD-481
- 3 PICK-UP TAB DEFLECTS UPON INSERTION OF THE SHIELD.

PART NUMBER BREAKDOWN

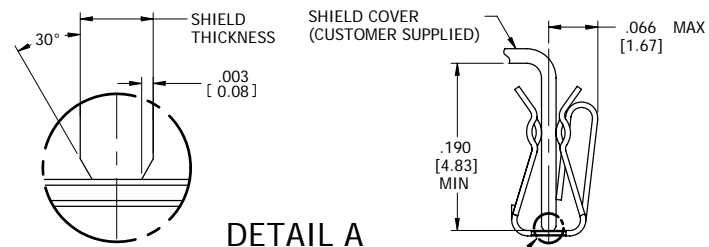
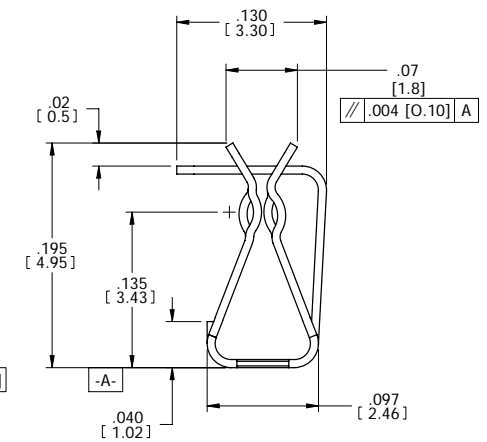
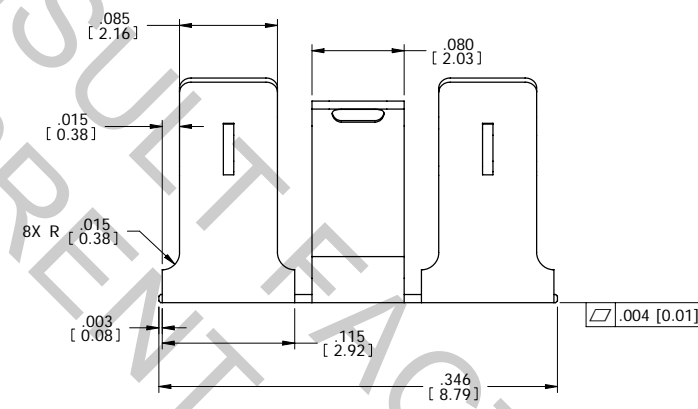


CODE	SHIELD	"A" HOLES
1	.014±.002 [0.36±0.05]	No Hole
2	.019±.002 [0.48±0.05]	No Hole
6	.014±.002 [0.36±0.05]	.040 [1.02]
7	.019±.002 [0.48±0.05]	.040 [1.02]

REV	REVISION RECORD	ECN	BY	APVD	DATE
A	INITIAL RELEASE PER EWR990064	502181	JB	JB	06/05/02
B	CHG QTY PER REEL TO 1500	502202	JB	JB	06/20/02
C	ADDED P/N PER EWR103508	503111	BILL	JB	01/20/04
D	ADDED DUAL DIM PER EWR103940	503412	BILL	JB	6/22/2004
E	CORRECT DIM ON SOLDER PAD	505093	HR	PVB	8/27/2007
F	CORRECT DIM ON SOLDER PAD	505172	HR	PVB	11/9/2007
G	ADD ".mm" PER EWR105675	505245	HR	PVB	1/14/2008
H	ADDED .190 MIN SHIELD HEIGHT	505554	DJA	HR	9/24/2008

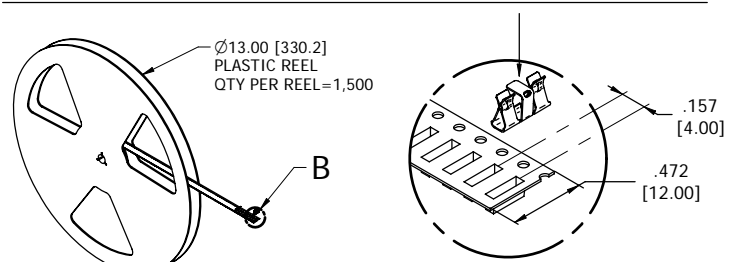


RECOMMENDED PAD SIZE



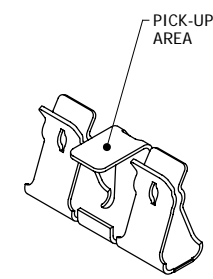
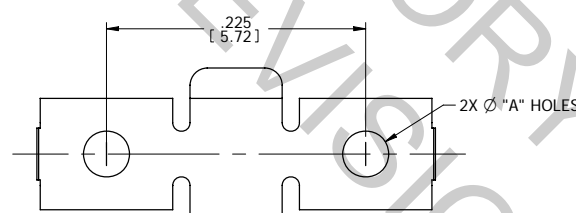
DETAIL A  
EDGE FINISH  
RECOMMENDATION

APPLICATION VIEW



TAPE & REEL PACKAGING

DETAIL B



CUSTOMER DRAWING

The drawing and the information set forth hereon are the property of Autosplice, Inc. and are to be held in trust and confidence. Publication, disclosure, or use for any purpose not expressly authorizing in writing by Autosplice, Inc. is prohibited.

MATERIAL:

FINISH:

TOLERANCES UNLESS OTHERWISE SPECIFIED DIMENSIONS IN INCHES		Autosplice, Inc. 10121 Barnes Canyon Rd. San Diego, CA 92121-2725 858.535.0077	
DECIMAL: .XX = ± .02 [X.X] = ± [0.5] XXX = ± .010 [X.XX] = ± [0.25]	ANGULAR: ± 1°	DATE: 12/7/99	DATE: 12/7/99
SMT MAXI RFI CLIP		ENGINEERED BY: JOE	DATE: 12/7/99
SIZE: C	FINISH: OAE89	DESIGNER: JB	DATE: 12/7/99
SCALE: 1:1		PART NO: C7-V2010-1 [ ] 5 [ ]	
DRAWING NO: C7-V2010-1 [ ] 5 [ ]		MODEL NO: 7-V2010-015.pdm	
SHEET 1 OF 1			

4

3

2

1